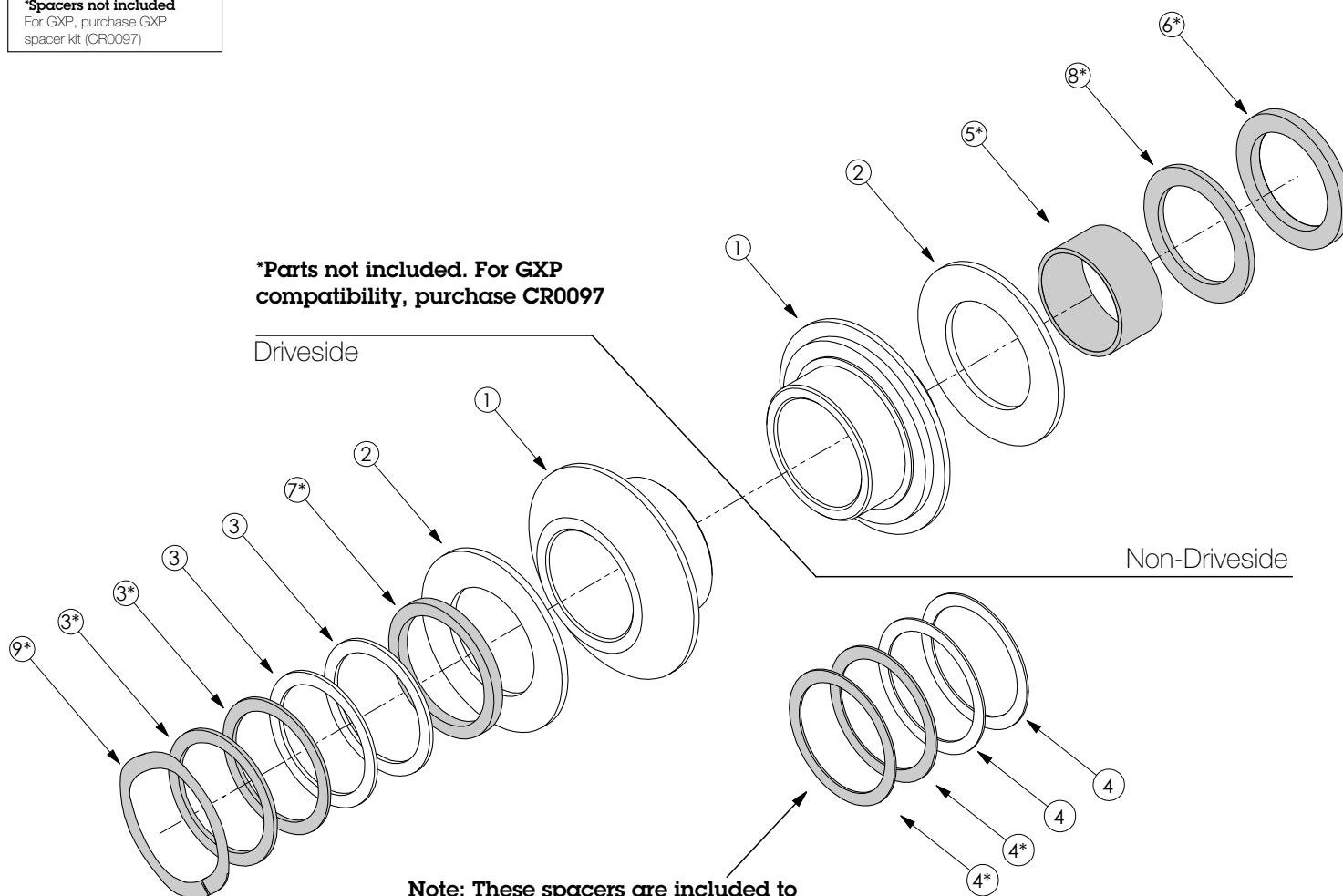


Assembly Instruction Guide

ITEM NO.	DESCRIPTION	BB30 68 mm, 24 mm Spindle (Std. road, Shimano type)		BB30 68 mm, 24 mm Spindle (Std. road, GXP Type)		BB30 73 mm, 24 mm Spindle (Std. MTN, Shimano Type)		BB30 73 mm, 24 mm Spindle (Std. MTN, GXP Type)		PF30 68 mm, 24 mm Spindle (Std. MTN, Shimano Type)		PF30 68 mm, 24 mm Spindle (Std. MTN, GXP Type)		PF30 73 mm, 24 mm Spindle (Std. MTN, Shimano Type)		PF30 73 mm, 24 mm Spindle (Std. MTN, GXP Type)	
		Driveside	Non-driveside	Driveside	Non-driveside	Driveside	Non-driveside	Driveside	Non-driveside	Driveside	Non-driveside	Driveside	Non-driveside	Driveside	Non-driveside	Driveside	Non-driveside
1	BB30/PF30 Converter	1	1	1	1	1	1	1	1	1	1	1	1	1	1	1	1
2	BB30/PF30 Spacer	1	1	1	1	1	1	1	1								
3	1mm Spacer			4		1	1	3				1		2		3	
4	0.5mm Spacer																
5*	GXP Type Spacer				1			1				1					1
6*	2.5mm Spacer (GXP Type)				1			1									
7*	2.5mm Spacer											1					
8*	1.5mm Spacer (GXP Type)												1				1
9*	Wavy Washer			1				1				1				1	

***Spacers not included**
For GXP, purchase GXP spacer kit (CR0097)

***Parts not included. For GXP compatibility, purchase CR0097**



Note: These spacers are included to account for slight variances in bottom bracket width from different manufacturers. Use as needed.

The Problem Solvers BB30/PressFit 30 Adapter Kit allows you to use your old mountain cranks (external bottom bracket cranksets with 24mm spindles, such as Shimano Hollowtech II, FSA MegaExo and Race Face X-Type) with BB30 and PressFit 30 bottom brackets. For GXP systems, use the GXP spindle spacer kit (CR0097), sold separately.

WARNING: Read these instructions completely before beginning installation of this product. If you lack the knowledge or tools to perform installation, please have your local professional bicycle mechanic perform the installation. Improper installation can result in loss of control or damage to the bicycle and/or serious injury or death to the rider.

TOOLS:

- Mallet (optional)
- Elbow grease
- Bottom bracket tools (varies depending on bottom bracket and/or crank manufacturer)

INSTALL BOTTOM BRACKET:

Install your BB30 or PressFit 30 bottom bracket according to the manufacturer's instructions (fig 1).

INSTALL ADAPTER CUPS:

Press one of the adapter cups into the drive side bearing until flush (fig 2-4). If needed, gently tap the cup all the way in with a soft mallet. Repeat for the non-drive side.

INSTALL CRANKS:

Using the chart on page 1, install the appropriate spacers on your crank spindle and install the crank accordingly to manufacturer instructions. Repeat for the other side.

LIMITED 2-YEAR WARRANTY

This Problem Solvers product is warranted against defects in materials and workmanship for two (2) years, from the original date of retail purchase by the consumer, subject to the limitations detailed below. This limited warranty is expressly limited to the repair or replacement of the original product, at the option of Problem Solvers, and is the sole remedy of the warranty. This limited warranty applies only to the original purchaser of the Problem Solvers product and is not transferable. In no event shall Problem Solvers be liable for any loss, inconvenience or damage, whether direct, incidental or consequential or otherwise resulting from breach of any express or implied warranty or condition, of merchantability, fitness for a particular purpose, or otherwise with respect to this product except as set forth herein.

This warranty does not cover the following:

- Damage due to improper assembly or follow-up maintenance or lack of skill, competence or experience of the user
- Products that have been modified, neglected, used in competition or for commercial purposes, misused or abused, involved in accidents or anything other than normal use
- Damage or deterioration to the surface finish, aesthetics or appearance of the product
- Normal wear and tear
- Labor required to remove and/or refit and re-adjust the product within the bicycle assembly

This warranty gives the consumer specific legal rights, and those rights and other rights may vary from state to state.



Figure 1



Figure 2

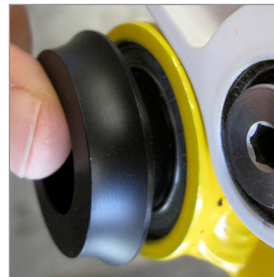


Figure 3

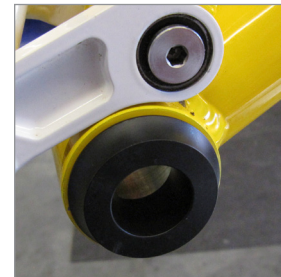


Figure 4



Figure 5



Figure 6



Figure 7



Figure 8