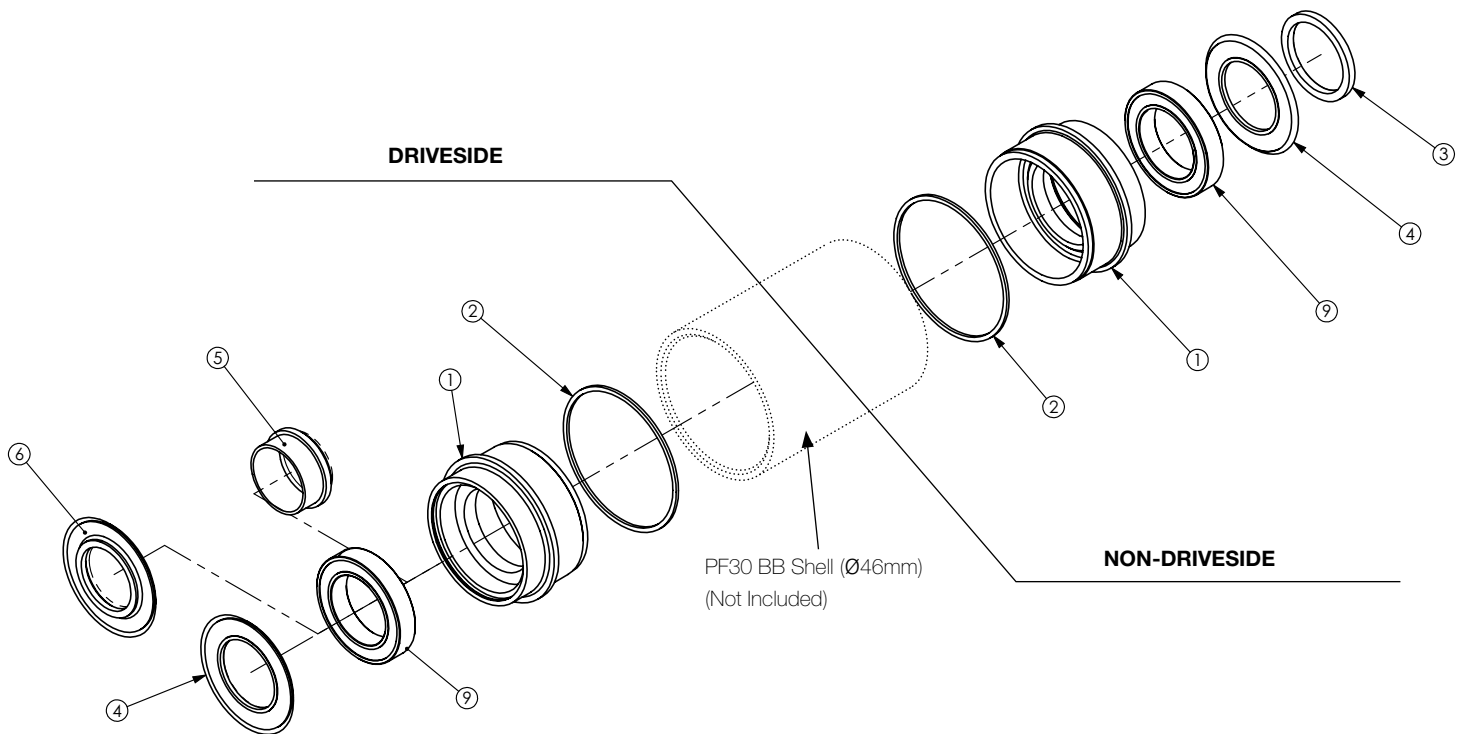


Bill of Materials			
Item No.	Description	Quantity	Quantity
		Truvativ GXP Type (CR0095)	Shimano/Race Face Type (CR0094)
1	PF30/24mm BB Cup	2	2
2	1mm Spacer	-	2
3	2.5mm Spacer	-	1
4	Enduro Spindle Seal	1	2
5	Enduro GXP Adapter	1	-
6	Enduo GXP Seal	1	-
9	Cartridge Bearing	2	2



**WARNING:** Read these instructions completely before beginning installation of this product. If you lack the knowledge or tools to perform installation, please have your local professional bicycle mechanic perform the installation. Improper installation can result in loss of control or damage to the bicycle and/or serious injury or death to the rider.

**REQUIRED PARTS**

First, make sure you've got the right stuff:

- Problem Solvers A46 Bottom Bracket and compatible cranks (CR0094 for Shimano-style 24mm cranks, CR0095 for GXP cranks)
- A frame with a PressFit 30-compatible bottom bracket (Ø 46mm)

**TOOLS**

- Headset press
- Bicycle-specific grease
- Crank installation tools (per manufacturer's instructions)
- 10mm hex wrench (for removal only)

**INSTALLATION:**

1. Grease the bottom bracket shell (figure 1).
2. For CR0094 (24mm cranks), skip to the next step. For CR0095 (GXP-type cranks), identify the non-drive-side cup. The non-drive-side cup has a GXP-specific spacer (figure 2).
3. Grease the non-drive-side cup (figure 3).
4. With the bearing seals removed, install the non-drive-side bottom bracket cup. Be certain that the cup presses in straight. If it begins to press in crooked, remove it and start over (figures 4–5).
5. Repeat steps 3 & 4 for the drive-side cup.
6. Grease the bearings and install the bearing seals (figures 6 & 7).
7. Install your cranks to the manufacturer's specifications (figure 8).

**REMOVAL**

Removal requires Problem Solvers removal tool, TL0099.

**LIMITED 2-YEAR WARRANTY**

This Problem Solvers product is warranted against defects in materials and workmanship for two (2) years, from the original date of retail purchase by the consumer, subject to the limitations detailed below. This limited warranty is expressly limited to the repair or replacement of the original product, at the option of Problem Solvers, and is the sole remedy of the warranty. This limited warranty applies only to the original purchaser of the Problem Solvers product and is not transferable. In no event shall Problem Solvers be liable for any loss, inconvenience or damage, whether direct, incidental or consequential or otherwise resulting from breach of any express or implied warranty or condition, of merchantability, fitness for a particular purpose, or otherwise with respect to this product except as set forth herein.

This warranty does not cover the following:

- Damage due to improper assembly or follow-up maintenance or lack of skill, competence or experience of the user
- Products that have been modified, neglected, used in competition or for commercial purposes, misused or abused, involved in accidents or anything other than normal use
- Damage or deterioration to the surface finish, aesthetics or appearance of the product
- Normal wear and tear
- Labor required to remove and/or refit and re-adjust the product within the bicycle assembly

This warranty gives the consumer specific legal rights, and those rights and other rights may vary from state to state.



Figure 1



Figure 2



Figure 3



Figure 4



Figure 5



Figure 6



Figure 7



Figure 8