

Thanks for purchasing a Problem Solvers Braze-On Light Mount. This mount will attach to your bike frame's braze-ons, allowing you to mount a head or taillight just about anywhere you can thread a bolt in.

COMPATIBILITY/INTENDED USE

The Braze-On Light Mount is designed to provide a light-mounting alternative to your handlebars. The Braze-On Light Mount should be mounted to a mid-blade fork mount, dropout eyelet, or rear rack mounts.

⚠ WARNING: Do not install the Braze-On Light Mount anywhere that can interfere with riding, that is in the way of wheels or moving parts, or that interferes with component function.

⚠ WARNING: CYCLING CAN BE DANGEROUS. BICYCLE PRODUCTS SHOULD BE INSTALLED AND SERVICED BY A PROFESSIONAL MECHANIC. NEVER MODIFY YOUR BICYCLE OR ACCESSORIES. READ AND FOLLOW ALL PRODUCT INSTRUCTIONS AND WARNINGS INCLUDING INFORMATION ON THE MANUFACTURER'S WEBSITE. INSPECT YOUR BICYCLE BEFORE EVERY RIDE. ALWAYS WEAR A HELMET.

For additional technical and safety information, visit:
www.problemsolversbike.com/safety

TOOLS REQUIRED

4mm Allen wrench

Torque wrench

INSTALLATION

1. Assemble the light mount as shown in the pictures. For mid-blade mounts and the like, flip the end cap so the short end protrudes (figure 1) and use the 45mm bolt. For fork dropouts, or other areas where extra clearance is needed, point the long end out (figure 2) and use the 65mm bolt.
2. Torque the bolt 5–7Nm

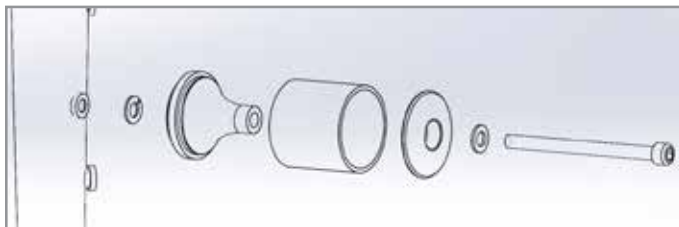


Figure 1

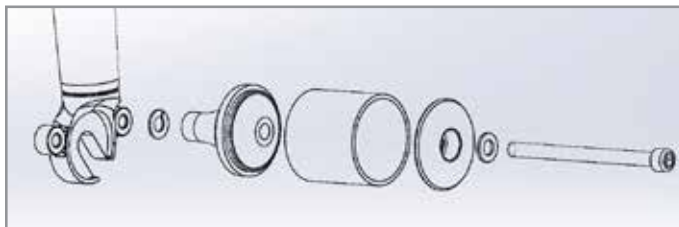


Figure 2

ONGOING MAINTENANCE

Periodically check to make sure all attachment bolts are properly torqued.

A LIMITED 2-YEAR WARRANTY

PROBLEM SOLVERS™ warrants this new PROBLEM SOLVERS product against defects in materials and workmanship for two (2) years from the original date of retail purchase by the consumer. This limited warranty is expressly limited to the repair or replacement of the original product, at the option of PROBLEM SOLVERS, and is the sole remedy of the warranty. This limited warranty applies only to the original purchaser of the PROBLEM SOLVERS product and is not transferable.

In no event shall PROBLEM SOLVERS be liable for any loss, inconvenience or damage, whether direct, incidental or consequential or otherwise resulting from breach of any express or implied warranty or condition of merchantability, fitness for a particular purpose, or otherwise with respect to this product except as set forth herein. This warranty gives the consumer specific legal rights, and those rights and other rights may vary from state to state.

This warranty does not cover the following:

- Damage due to improper assembly or follow-up maintenance or lack of skill, competence or experience of the end user
- Products that have been modified, neglected, used in competition or for commercial purposes, misused or abused, involved in accidents or anything other than normal use
- Damage or deterioration to the surface finish, aesthetics or appearance of the product
- Normal wear and tear
- Labor required to remove and/or refit and re-adjust the product within the bicycle assembly

TO THE EXTENT NOT PROHIBITED BY LAW, THESE WARRANTIES ARE EXCLUSIVE AND THERE ARE NO OTHER EXPRESS OR IMPLIED WARRANTIES OR CONDITIONS INCLUDING WARRANTIES OR CONDITIONS OF MERCHANTABILITY AND FITNESS FOR A PARTICULAR PURPOSE.